

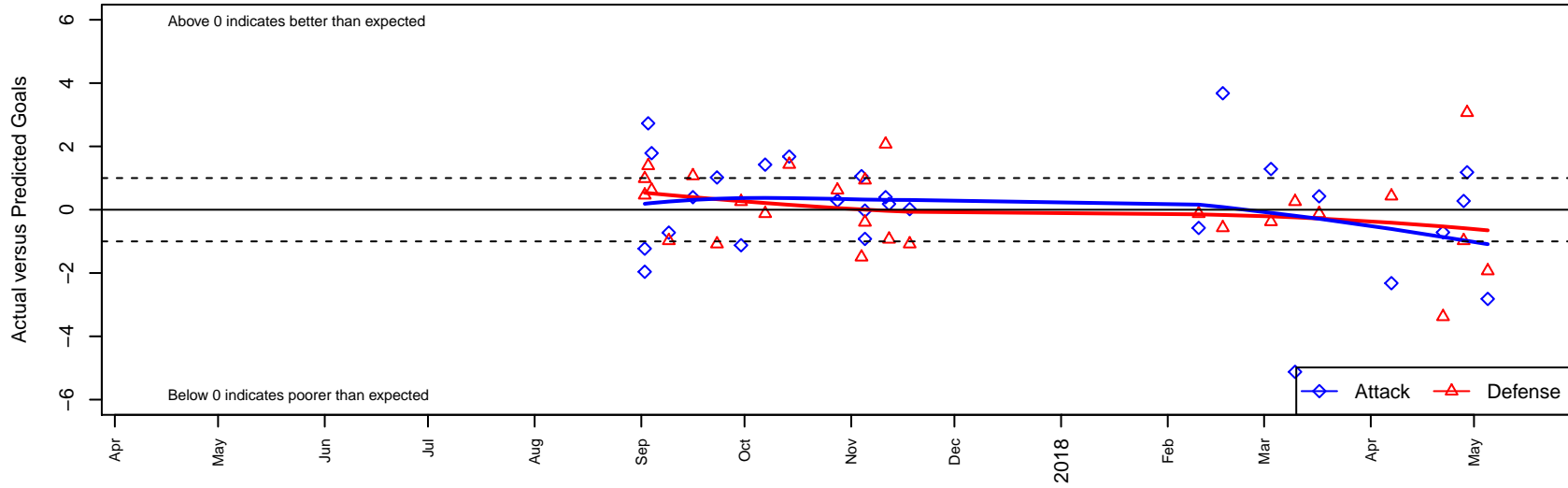
Seattle United USSDA B04

Seattle United
 Seattle, WA
 B04 total strength=1526
 attack=26.2 defense=5.84
 fall league = USSDA U14

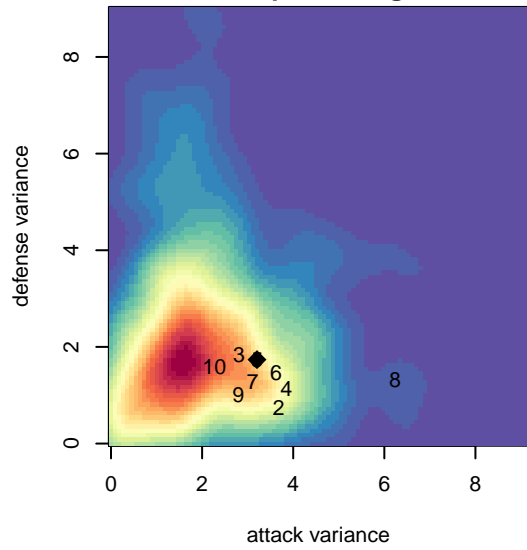
alt names used:
 SEATTLE UNITED B04 USSDA (WA)
 Seattle United U-14

Venues played:
 2017 SX Cup U14 Premier – Tier 1 U14
 2017 USSDA U14

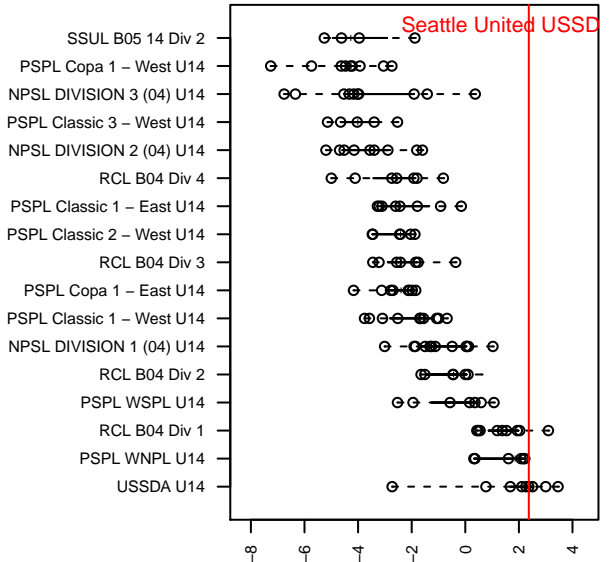
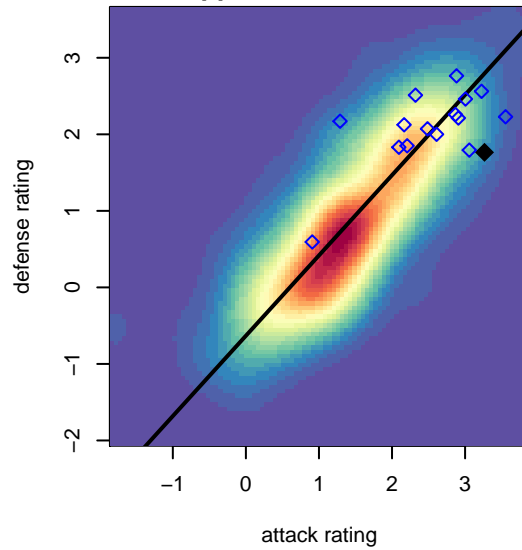
Seattle United USSDA B04
 Dots are actual minus expected GF (blue circles) and GA (red triangles).
 Blue line is smoothed change in attack strength. Red is smoothed change in defense strength.



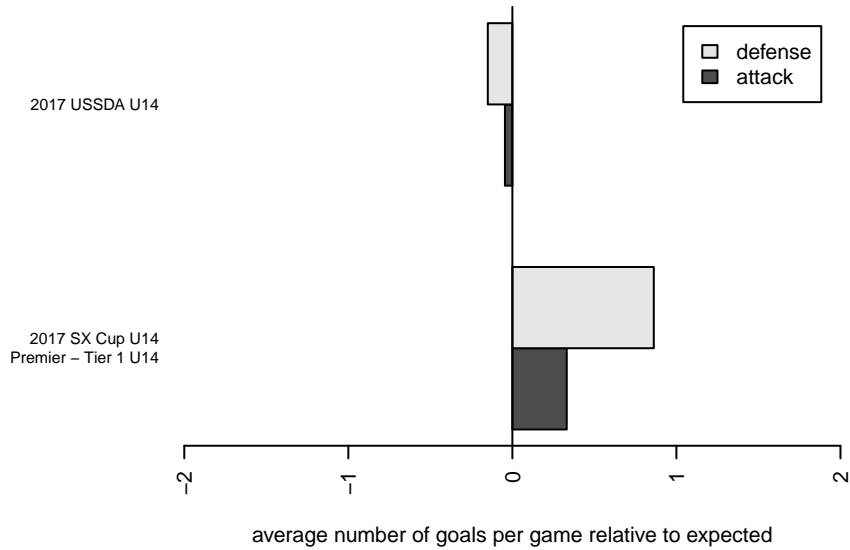
**attack and defense variance (black dot)
relative to other teams
and top 10 in region**



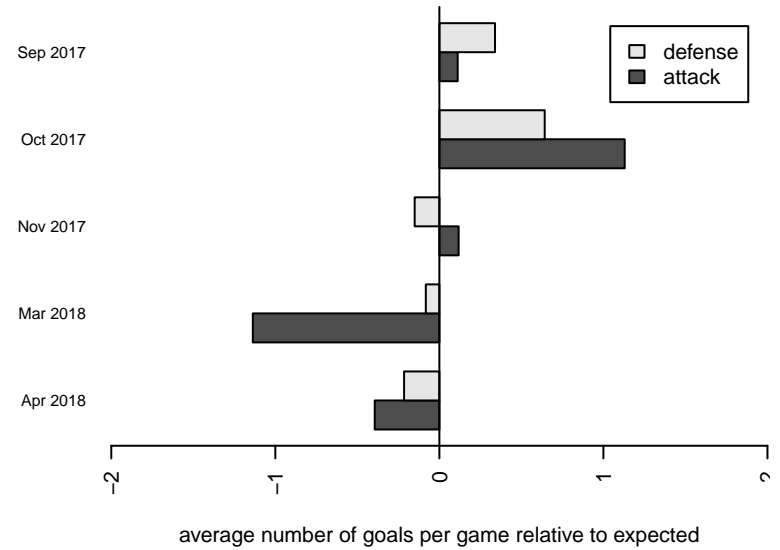
**attack and defense rating
relative to others at age
and all opponents in last 13 months**



Performance relative to 13 month average



Performance relative to 13 month average



date	home		away		venue	pred.home	pred.away
2018-05-05	PacNW USSDA B04	5	Seattle United USSDA B04	0	2017 USSDA U14	3.07	2.82
2018-04-29	Seattle United USSDA B04	4	PacNW USSDA B04	0	2017 USSDA U14	2.82	3.07
2018-04-28	GS Surf USSDA B04	4	Seattle United USSDA B04	3	2017 USSDA U14	3.02	2.72
2018-04-22	Portland Timbers USSDA B04	6	Seattle United USSDA B04	1	2017 USSDA U14	2.62	1.71
2018-04-07	Seattle United USSDA B04	2	Snohomish United USSDA B04	1	2017 USSDA U14	4.32	1.43
2018-03-17	WPFC USSDA B04	2	Seattle United USSDA B04	4	2017 USSDA U14	1.88	3.58
2018-03-10	Seattle United USSDA B04	11	WA Rush USSDA B04	0	2017 USSDA U14	16.12	0.26
2018-03-03	Seattle United USSDA B04	3	Portland Timbers USSDA B04	3	2017 USSDA U14	1.71	2.62
2018-02-17	Snohomish United USSDA B04	2	Seattle United USSDA B04	8	2017 USSDA U14	1.43	4.32
2018-02-10	Seattle United USSDA B04	3	WPFC USSDA B04	2	2017 USSDA U14	3.58	1.88
2017-11-18	Crossfire Premier USSDA B04	5	Seattle United USSDA B04	2	2017 USSDA U14	3.92	1.98
2017-11-12	PacNW USSDA B04	4	Seattle United USSDA B04	3	2017 USSDA U14	3.07	2.82
2017-11-11	Seattle United USSDA B04	5	Eastside FC USSDA B04	1	2017 USSDA U14	4.60	3.07
2017-11-05	Seattle United USSDA B04	3	Santa Rosa United USSDA B04	2	2017 USSDA U14	3.03	2.93
2017-11-05	Real Colorado USSDA A B04	1	Seattle United USSDA B04	2	2017 USSDA U14	0.60	2.92
2017-11-04	Strikers FC USSDA B04	7	Seattle United USSDA B04	4	2017 USSDA U14	5.50	2.94
2017-10-28	Seattle United USSDA B04	2	Portland Timbers USSDA B04	2	2017 USSDA U14	1.71	2.62
2017-10-14	Snohomish United USSDA B04	0	Seattle United USSDA B04	6	2017 USSDA U14	1.43	4.32
2017-10-07	Seattle United USSDA B04	5	WPFC USSDA B04	2	2017 USSDA U14	3.58	1.88
2017-09-30	WA Rush USSDA B04	0	Seattle United USSDA B04	15	2017 USSDA U14	0.26	16.12
2017-09-23	Seattle United USSDA B04	3	Crossfire Premier USSDA B04	5	2017 USSDA U14	1.98	3.92
2017-09-16	Eastside FC USSDA B04	2	Seattle United USSDA B04	5	2017 USSDA U14	3.07	4.60
2017-09-09	Seattle United USSDA B04	2	GS Surf USSDA B04	4	2017 USSDA U14	2.72	3.02
2017-09-04	Seattle United USSDA B04	4	Vancouver Island Wave B04	1	2017 SX Cup U14 Premier – Tier 1 U14	2.21	1.62
2017-09-03	Seattle United USSDA B04	6	Coquitlam Metro Ford –Unk B04	0	2017 SX Cup U14 Premier – Tier 1 U14	3.27	1.39
2017-09-02	Seattle United USSDA B04	2	Fraser Valley Premier B04	1	2017 SX Cup U14 Premier – Tier 1 U14	3.96	1.98
2017-09-02	Seattle United USSDA B04	3	Coastal FC B04	1	2017 SX Cup U14 Premier – Tier 1 U14	4.23	1.46